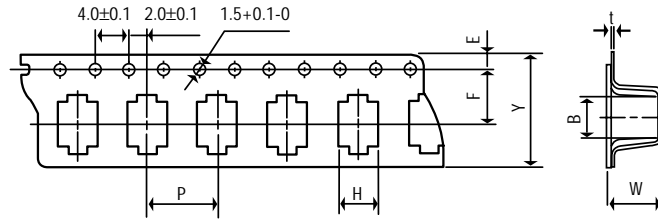




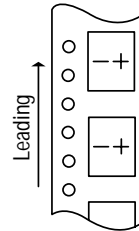
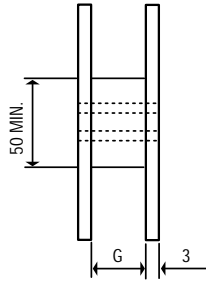
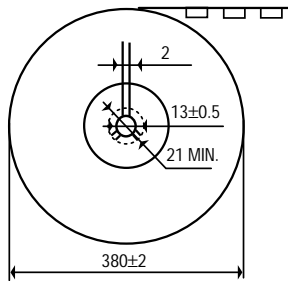
Chip Aluminum Electrolytic Capacitor Taping Specifications

CARRIER TAPE



DXL	Y±0.3	H±0.2	W±0.2	P±0.1	E±0.1	F±0.1	B±0.2	t
4 x 4.5	12.0	14.25	4.7	8.0	1.75	5.5	5.0	0.4
5 x 4.5	12.0	5.7	5.7	12.0	1.75	5.5	5.0	0.4
6.3 x 4.5	16.0	7.0	7.0	12.0	1.75	7.5	5.1	0.4
3 x 5.4	12.0	3.7	3.7	8.0	1.75	5.5	5.8	0.4
4 x 5.4	12.0	4.7	4.7	8.0	1.75	5.5	5.8	0.4
4 x 5.8	12.0	4.7	4.7	8.0	1.75	5.5	5.8	0.4
5 x 5.4	12.0	5.7	5.7	12.0	1.75	5.5	5.8	0.4
5 x 5.8	12.0	5.7	5.8	12.0	1.75	5.5	5.8	0.4
6.3 x 5.4	16.0	7.0	7.0	12.0	1.75	7.5	5.8	0.4
6.3 x 5.8	16.0	7.0	7.0	12.0	1.75	7.5	6.5	0.4
6.3 x 7.7	16.0	7.0	7.0	12.0	1.75	7.5	8.2	0.4
8 x 6.2	24.0	8.7	8.7	16.0	1.75	11.5	11.1	0.4
8 x 10.2	24.0	8.7	8.7	16.0	1.75	11.5	11.1	0.4
10 x 10.2	24.0	10.7	10.7	16.0	1.75	11.5	11.2	0.4

REEL



Diameter	G
3, 4, 5	14
6.3	18
8, 10	26

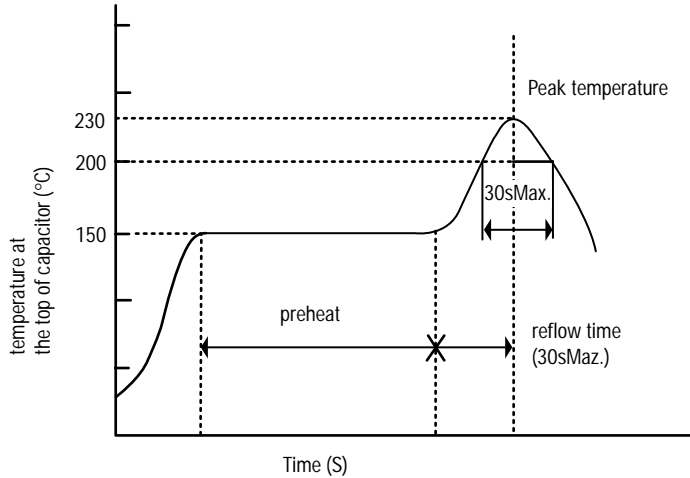
(mm)

DXL(mm)	Quantity per Reel
4 x 4.5	2000
5 x 4.5	2000
6.3 x 4.5	1000
3 x 5.4	2000
4 x 5.4	2000
4 x 5.8	2000
5 x 5.4	2000
5 x 5.8	1000
6.3 x 5.4	1000
6.3 x 5.8	1000
6.3 x 7.7	900
8 x 6.3	1000
8 x 10.2	500
10 x 10.2	500



Surface Mount Chip Aluminum Electrolytic Capacitor Permissible Reflow Conditions

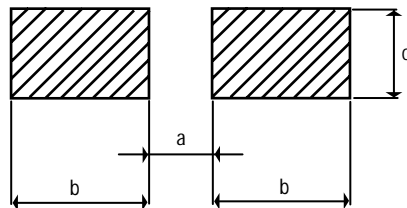
Permissible Reflow Condition: air reflow and IR reflow



- Preheat: Within 120 sec, 150°C and less.
- Peak Temperature: Less than 230°C, within 5 sec.
- Time for more than 200°C: within 30 sec.
- Reflow time: within 30 sec.

- Please cool the PC boards quickly after soldering.
- In case of capacitors are place other than the permissible reflow condition, please consult us.

Land pattern



Diameter	a	b	c
3	0.8	2.2	1.7
4	1.0	2.6	1.8
5	1.4	3.0	1.8
6.3	2.1	3.5	1.8
8	2.8	4.1	2.1
10	4.3	4.4	2.5

(mm)

