

## Aluminum Electrolytic Capacitors

+ 105°C Low Impedance, Low Profile Surface Mount Chip

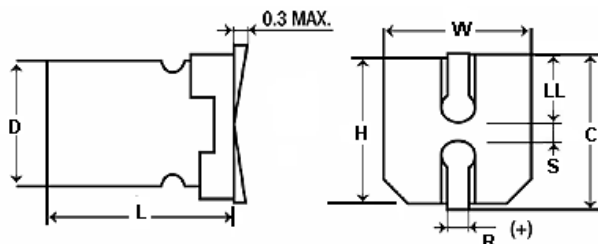
### FEATURES

Small size – Long Life – Very Low Impedance

### APPLICATIONS

Filtering – Bypass/ Coupling – De-Coupling

<b>Operating Temperature Range</b>		<b>-55°C to +105°C</b>						
<b>Capacitance Tolerance</b>		<b>+20% at 120 Hz, 20°C</b>						
<b>Surge Voltage</b>	<b>WVDC</b>	<b>6.3</b>	<b>10</b>	<b>16</b>	<b>25</b>	<b>35</b>	<b>50</b>	
	<b>SVDC</b>	7.9	13	20	32	44	63	
<b>Dissipation Factor</b>		<b>6.3</b>	<b>10</b>	<b>16</b>	<b>25</b>	<b>35</b>	<b>50</b>	
		.22	.2	.16	.14	.12	.12	
<b>Leakage Current</b>		<b>2 Minutes</b>						
		.01CV or 3uA, Whichever is greater						
<b>Low Temperature Stability Impedance Ratio (120 Hz)</b>	<b>Rated WVDC</b>	<b>6.3</b>	<b>10</b>	<b>16</b>	<b>25</b>	<b>35</b>	<b>50</b>	
	<b>-25°C to +20°C</b>	2	2	2	2	2	2	
	<b>-40°C to +20°C</b>	5	4	4	3	3	3	
<b>Load Life</b>	<b>1000 hours at 105°C with rated WVDC applied</b>							
	<b>Capacitance Change</b>	≤25% of initial measured value						
	<b>Dissipation Factor</b>	≤200% of maximum specified value						
	<b>Leakage Current</b>	≤100% of maximum specified value						
<b>Shelf Life</b>	<b>1000 hours at 85°C with no voltage applied</b>							
	<b>Capacitance Change</b>	≤25% of initial measured value						
	<b>Dissipation Factor</b>	≤200% of maximum specified value						
	<b>Leakage Current</b>	≤100% of maximum specified value						
<b>Resistance to Soldering Heat</b>	<b>Capacitors placed on a 250°C hot plate for 30 seconds with their electrode terminations facing downward will fulfill the following conditions after being cooled to room temperature</b>							
	<b>Capacitance Change</b>	≤10% of initial measured value						
	<b>Dissipation Factor</b>	≤100% of maximum specified value						
	<b>Leakage Current</b>	≤100% of maximum specified value						
		50	120	1k	100k	105	85	65
		.47	.5	.83	1.0	1.0	1.0	1.0

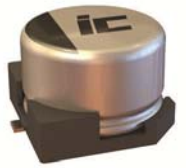


D	L	W±0.2	H±0.2	C±0.2	R	LL±0.2	S±0.2
4	5.4 +0.1/-0.2	4.3	4.3	5.0	0.5-0.8	1.8	1.0
5	5.4 +0.1/-0.2	5.3	5.3	6.0	0.5-0.8	2.1	1.4
6.3	5.4 +0.1/-0.2	6.6	6.6	7.3	0.5-0.8	2.4	2.2
6.3	5.8 +0.1/-0.2	6.6	6.6	7.3	0.5-0.8	2.4	2.2

# GAZ

## Aluminum Electrolytic Capacitors

+ 105°C Low Impedance, Low Profile Surface Mount Chip



Cap (uF)	VDC	PART #	Maximum ESR $\Omega$ 120Hz 20°C	Maximum Impedance $\Omega$ 100kHz 20°C	Maximum RMS ripple current (mA) 100kHz, 105°C	Dims DxL (mm)
1	35	105GAZ035M	198.944	60	3.9	4x5.4
1	50	105GAZ050M	198.944	30	4.9	4x5.4
2.2	35	225GAZ035M	90.429	60	3.6	4x5.4
2.2	50	225GAZ050M	90.429	30	4.5	4x5.4
3.3	50	335GAZ050M	60.286	30	3.7	4x5.4
3.3	35	335GAZ035M	60.286	60	3	4x5.4
4.7	35	475GAZ035M	42.328	60	2.5	4x5.4
4.7	50	475GAZ050M	42.328	41	3.1	5x5.4
6.8	25	685GAZ025M	34.132	60	2.7	4x5.4
6.8	35	685GAZ035M	29.256	60	2.2	5x5.4
6.8	50	685GAZ050M	29.256	55	2.7	6.3x5.4
10	16	106GAZ016M	26.526	60	3.3	4x5.4
10	35	106GAZ035M	19.894	70	1.9	5x5.4
10	50	106GAZ050M	19.894	70	2.4	6.3x5.4
22	6.3	226GAZ6R3M	18.086	60	3.2	4x5.4
22	16	226GAZ016M	12.057	85	1.8	5x5.4
22	35	226GAZ035M	9.043	120	1	6.3x5.4
33	10	336GAZ010M	10.048	75	1.7	5x5.4
33	25	336GAZ025M	7.033	140	1	6.3x5.4
47	6.3	476GAZ6R3M	8.466	80	2	5x5.4
47	16	476GAZ016M	5.644	140	1.1	6.3x5.4
68	10	686GAZ010M	4.876	130	1.1	6.3x5.4

**ic** ILLINOIS CAPACITOR

Your Global Source for World-Class Capacitors

©2013 Illinois Capacitor, Inc.

**North America**

Tel: 847.675.1760

sales@illcap.com

**Asia**

Tel: 852.2793 0931

sales@illcap.com.hk